



Features of Net-FM v. 3.3 & 3.3.1

presented
by

Anthony J. Bunker

Software QA & Documentation Manager



October 20, 2016

- At the conclusion of **Q2 2016** and **Q3 2016** INSITE was pleased to release Net-FM versions **3.3** and **3.3.1**, respectively. While version 3.3 was a major release, version 3.3.1 was rolled out to a targeted set of Consortium Members in time for their annual Space Survey efforts.
- After ICC 2016, version 3.3.1 will be made available for general release to the Consortium.
- The new features of Net-FM 3.3.1 focus mainly on Space Survey and Move Management, while 3.3's feature set is broader in scope.

Features & enhancements in the latest versions of Net-FM primarily relate to the following:

- Installation
- The Load Data modules
- Floor plans in Net-FM
- The Asset module
- Space Survey
- The Net-FM Navigator
- Move Management



In subsequent sections we will take a look at each of these in detail.

Several important enhancements have been made with respect to Net-FM installation:

- 1. Single installer** – it is no longer necessary to choose between a 32 and 64 bit installer. Net-FM will detect machine architecture as part of the installation process.
- 2. Enhanced detection of Oracle environment** – The Net-FM installer and the Support Files (used to manually upgrade the database) are now able to effectively detect multiple Oracle configurations:
 - Database software
 - ODAC (Oracle Data Access Components)
 - Oracle Client



We will discuss Load Data in detail as part of the Bulk Data Operations presentation.

- For now, it is important to note that the following 4 modules have been re-architected with respect to Load Data:
 - Space List
 - Organization Assignment
 - Use Assignment
 - Function Assignment
- Export to Excel: Load Data format
 - In conjunction with the aforementioned changes, it is now possible to export results from the Space List in the same order/format that is expected by Load Data. This makes it possible to perform edits quickly and efficiently, and then load changes back into the INSITE database.



A number of new features/enhancements have been made with respect to Net-FM floor plans:

- Global Use & Org color hatching
 - This has proven to be one of the more popular 3.3/3.3.1 features. The Net-FM Administrator now has the ability to create/assign an institution-wide color scheme for the purpose of highlighting Use and Org assignments in floor plans.
 - A column has been added to both the Org and Use tables to capture hexadecimal values representing each color.
 - Refer to the next slide for the corresponding Administration setting in Net-FM.

- Global Settings: Use & Org Color Hatching:

Use & Org Color Hatching

Admin - Global Settings: Use & Org Color Hatching

Update Record

Use - Color Hatching Org - Color Hatching

Use	Color
ALT/CONV - ALTERATION OR CONVERSION AREA	
AN FAC - ANIMAL FACILITIES	
AN FAC SVC - ANIMAL FACILITIES SVC	
AN LAB - ANIMAL LAB	
AN LAB SVC - ANIMAL LAB SVC	
APARTMT - APARTMENT	
APARTMT SVC - APARTMENT SVC	
ARM SVC - ARMORY SVC	
ARMORY - ARMORY	
ASSMBLY - ASSEMBLY	
ASSMBLY SVC - ASSEMBLY SVC	
ATH PE - ATHLETIC OR PHYSICAL EDUCATION	

Use & Org Color Hatching

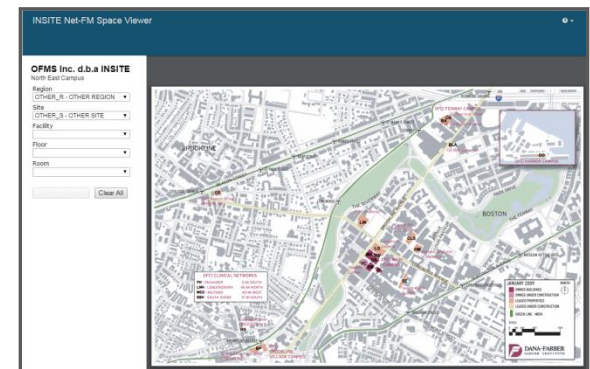
Admin - Global Settings: Use & Org Color Hatching

Update Record

Use - Color Hatching **Org - Color Hatching**

Organization	Color
ADMIN - ADMINISTRATION	
ADMISS - ADMISSIONS	
ADMISS_DUP - ADMISSIONS_DUP	
ADMSYS - ADMIN SYS DEV	
AERO - AERO & ASTRO	
AILAB - ART INTEL LAB	
ALL - ALL	
ALUMNI - ALUMNI ASSOC	
AP-ADM - A PROV-ADMN	
AP-ART - A PROV-ARTS	
AP-EPP - A PROV-ED PL & PRO	
AP-VPR - A PROV-VP-RES	

- New features/enhancements related to Net-FM floor plans [cont.]:
 - Gross Area in Net-FM floor plans
 - A setting now allows for the display of either the “external” or “internal” gross area for the calculation method in Net-FM floor plans
 - Legend font size
 - Able to dynamically change when displaying PDFs (redraw of floor plan is required, but re-query is not)
 - Space Viewer
 - Enhancements include the following:
 - Region map is reloaded when Site selection is cleared
 - Dropdown selections persist when page is refreshed
 - “Clear All” button added



The Net-FM Asset module

Most of the changes to the Net-FM Asset module can be attributed to the thoughtful feedback and requests of Darlene Pezza. These include:

- Facility Name
 - It is now possible to perform Simple and Advanced Queries by Facility Name from Asset | Asset
- Asset Details
 - Similar to the Space Details link, available from Net-FM's Space List, the Asset Details link was added to quickly, easily display a pop-up containing related accounting information for each asset.

Asset - Asset (Results)

Search Criteria: All

<input type="checkbox"/>					Asset Tag Number
<input type="checkbox"/>					MIT-0025640
<input type="checkbox"/>					OFM-0025639
<input type="checkbox"/>					OFM-0025792

Asset Accounting Details ×

Asset Accounting Records - Asset Tag Number OFM-0025639

Asset Tag Number	Account Number	Sub Code	PO Number	Voucher Number	Amount	Date	Useful Life	Person1
OFM-0025639	1873	622009	57339	28550	1680	21/7/1992	10	ADRIAN, F

[Close Window](#)

- Edit functionality
 - By popular demand, this capability has been re-introduced to the Net-FM Navigators

Space Navigator

- ▣ ATLANTA
- ▣ CAMBRIDGE
 - ▣ LOWER CAMPUS
 - ▣ OFMS CORPORATE HQ - OFMS
 - ▣ 1
 - 00E
 - 00L
 - 00S
 - 01
 - 02
 - 03
 - 04
 - 04A
 - 04B
 - 04C
 - ▣ 2

Edit This Record

Building:	OFMS
Floor:	2
Room:	04
Organization:	ADMIN
Org Pct:	100
Use - Space:	P CIRC
Use Pct:	100
Area:	122.81
Occupant Count:	
Area / Station:	
Utilization:	IN RANGE

Query Advanced Query Results Floor Plans Add Load Data Edit

Space - Space (Edit)

Building:

Floor:

Room:

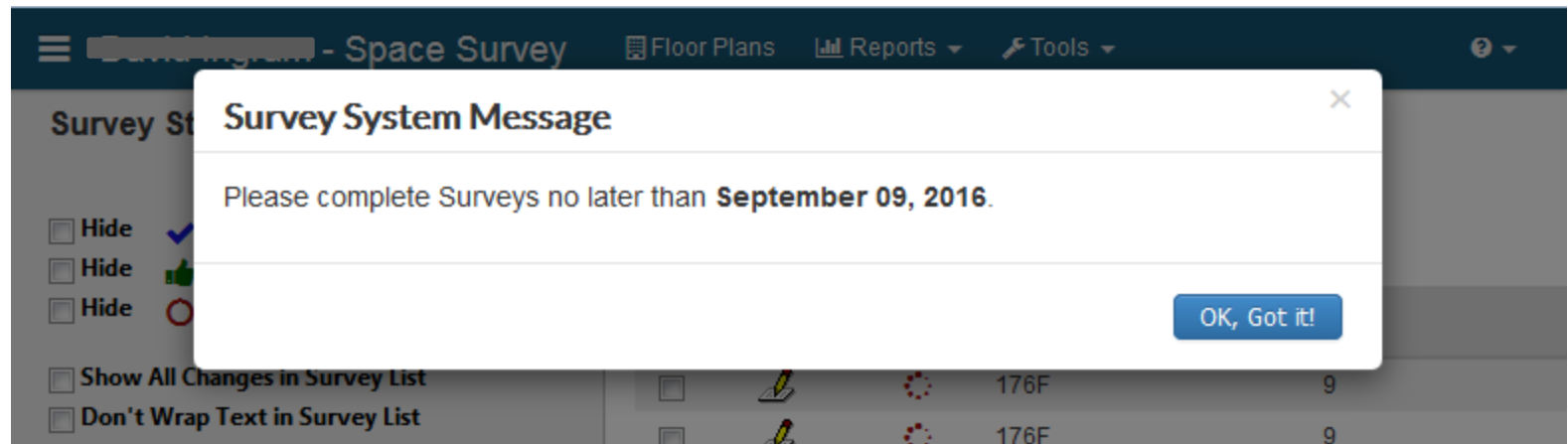
Organization:

Org Pct:

Use - Space:

A number of new features/enhancements have been incorporated into Space Survey. The following is an abridged listing:

- System message
 - The Survey Administrator now has the ability to specify a notification message (similar to the system message in Net-FM) that is displayed when a Surveyor opens a Survey (new session). Additionally, a separate message may be specified for the Survey Supervisors.



- Split-uses
 - In previous releases, Space Survey could only accommodate single-use changes. For split-use (a.k.a.) assignments only comments to the Survey Administrator could be captured. The Survey Admin would then use these comments to affect the appropriate changes using Net-FM.
 - If split/multiple Use assignments are enabled in Survey, Surveyors now have the ability to specify along with the respective percentages.
- Automatic Date/Time stamp
 - The Survey Admin has the option to enable a setting that automatically appends a date/time stamp when an edit/change is made to a Survey comment field

- Authorization Key
 - The Surveyor/Supervisor links now contain an “auth” or authorization key that is unique for each survey. This security enhancement prevents Survey users from intentionally or inadvertently changing the survey ID to gain access to a different survey.
 - Example link:
[http://\[redacted\]NetFM/survey.aspx?id=5502&authkey=1876E30960024537887C0C1043B30C42&db=uab_3.3.1 \[redacted\]](http://[redacted]NetFM/survey.aspx?id=5502&authkey=1876E30960024537887C0C1043B30C42&db=uab_3.3.1 [redacted])
- Rules/business logic
 - Introduced setting that allows the Survey Administrator to specify Use assignments for which PI assignments are required
 - Survey Administrator can now control the Space Contact types that are available for the Survey effort

Although this module is covered in detail in the DFCI presentation, it is worth mentioning two significant features/enhancements:

- A move self-service page is now available
 - This page is typically embedded in an intranet page and makes it possible for visitors to create a move request without being logged into INSITE Move Management.
- Enhanced reconciliation feature
 - Once a Move has been completed, the Move Management Administrator has the ability to use the reconciliation feature to update Occupancy assignments.
 - The feature has been enhanced to identify existing Occupancy assignments for all parties to the Move. This affords the opportunity to perform database cleanup for outdated records.

Any questions?

If you think of a question later, feel free to send an email to
support@insite.org

Thank you.